



The East Midlands
Sustainable Construction Innovation Network
(SC iNet)

What is an iNet?

Innovation

Innovation

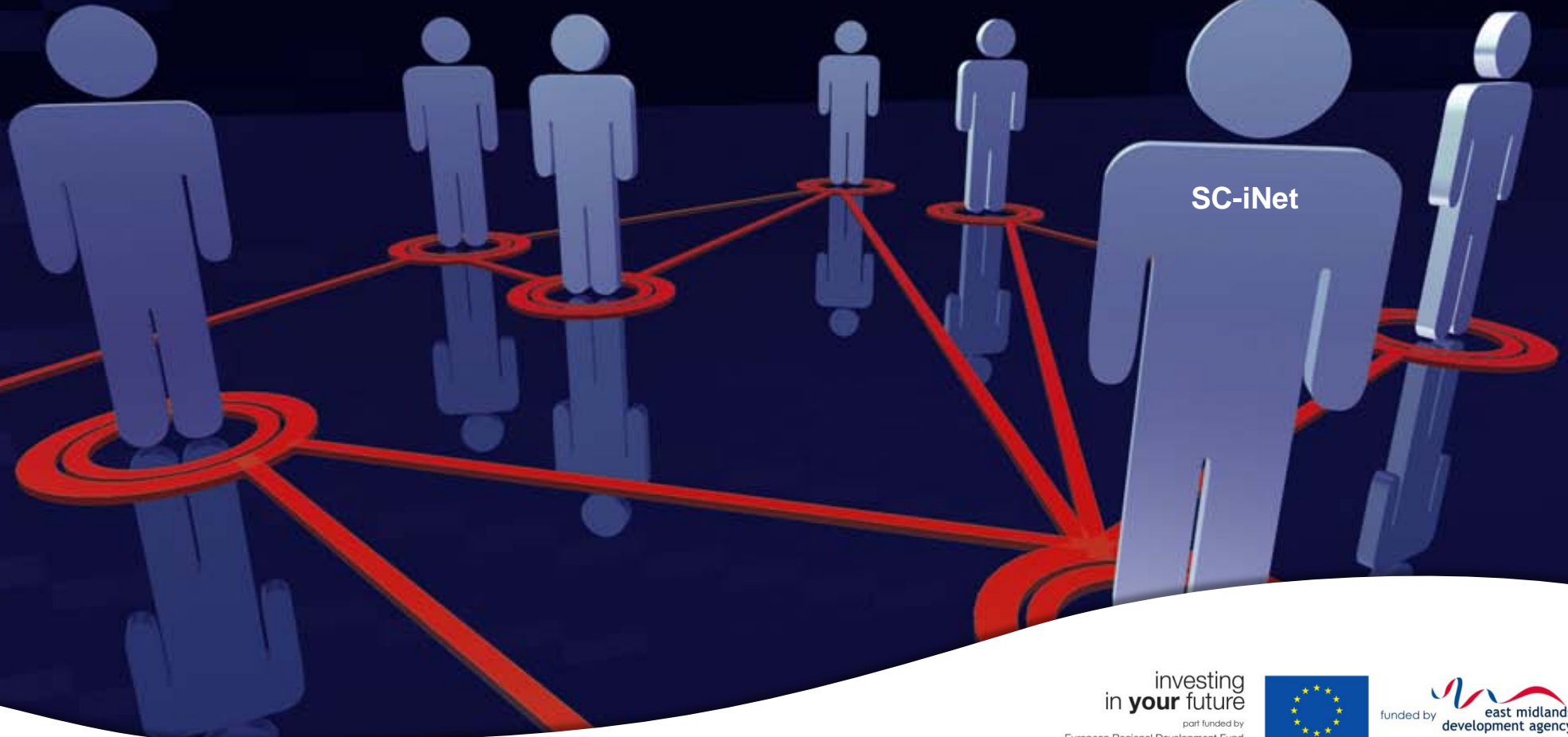
Innovation

Innovation

Innovation

Network

Innovation



What is iNet's function?

Higher Education
Institutions

Business

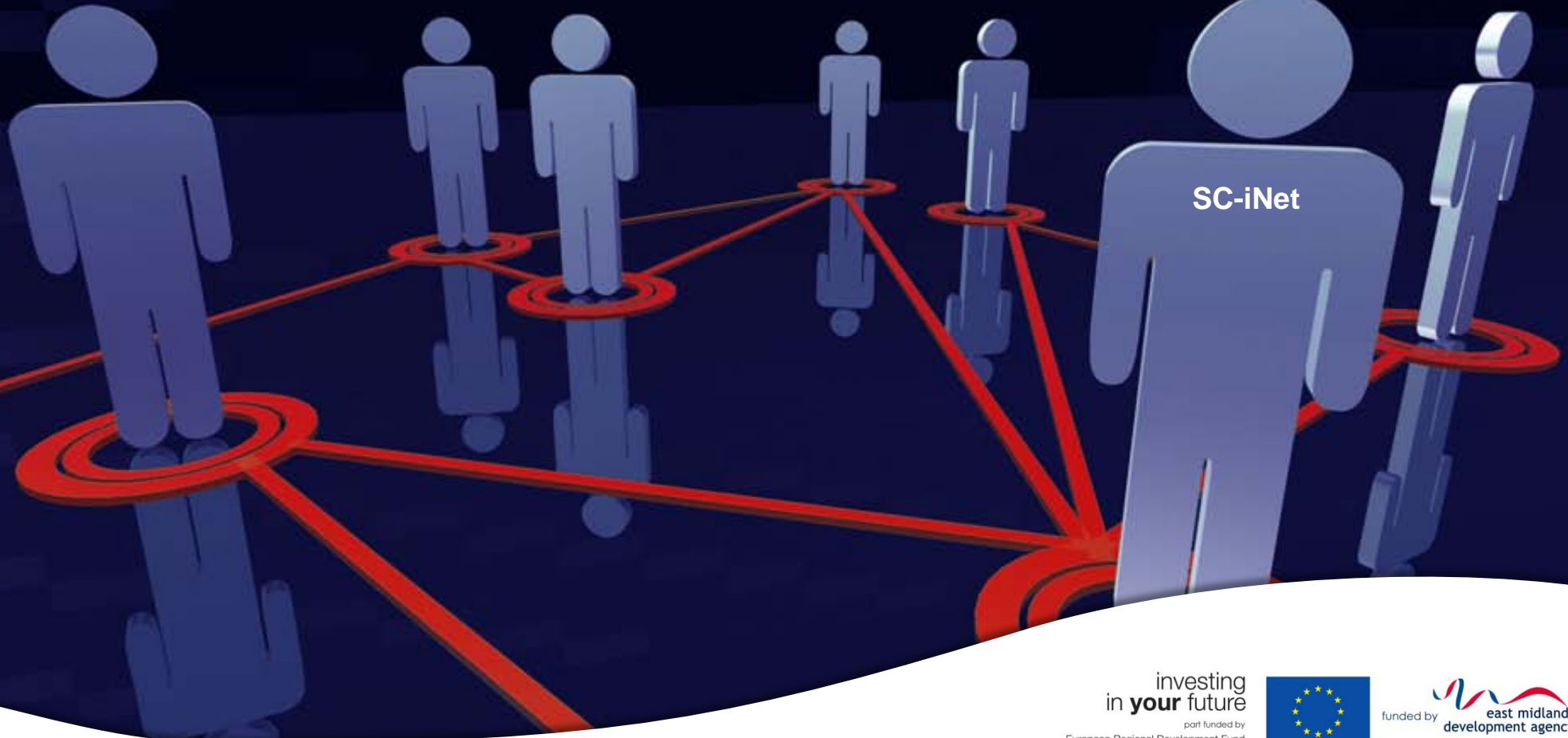
Universities

SME

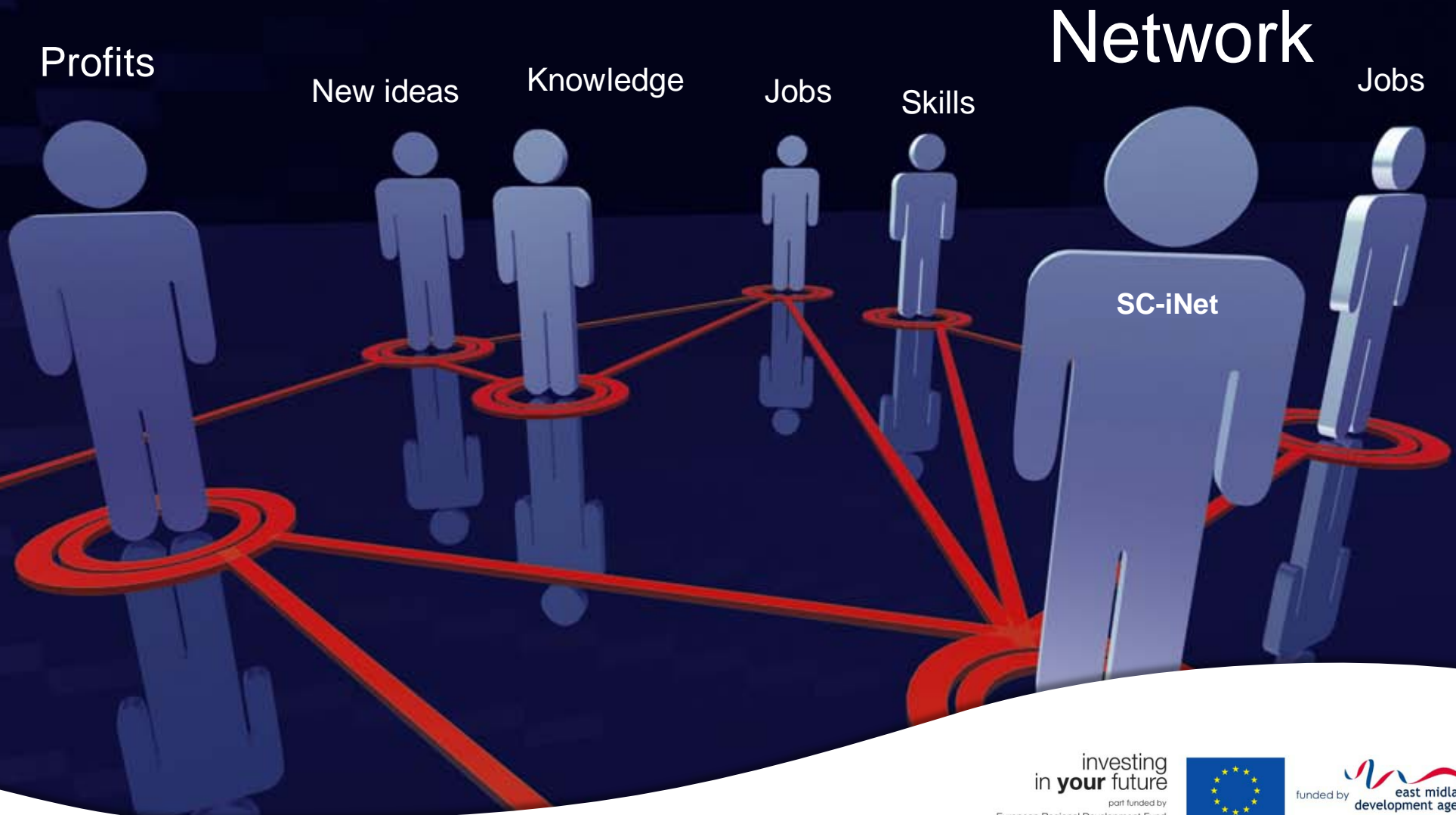
Business

Network

SME



The iNet outcomes?



Where do we fit in?

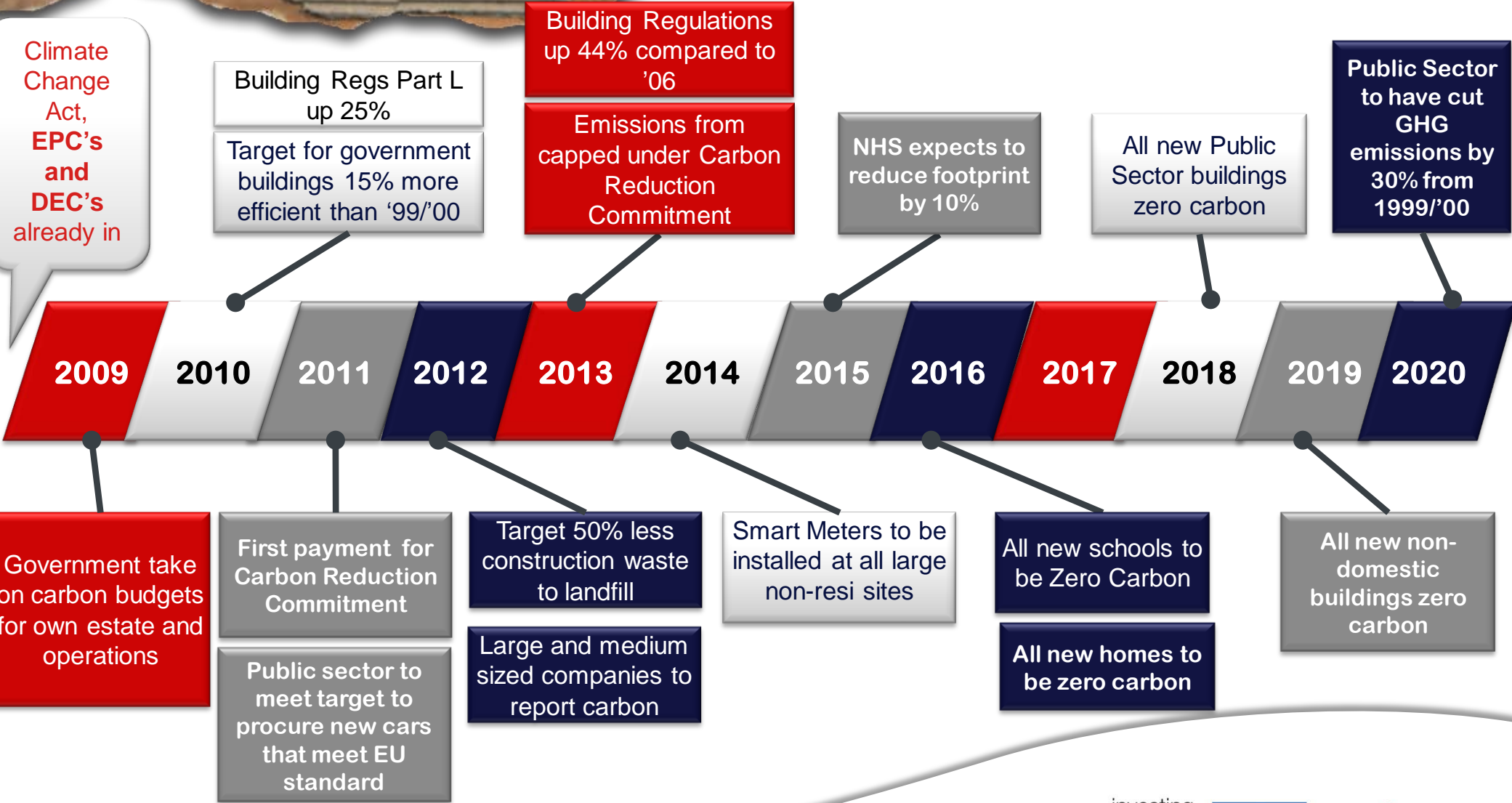


iNets
east midlands innovation



Timeline of Issues

Climate Change Act, EPC's and DEC's already in

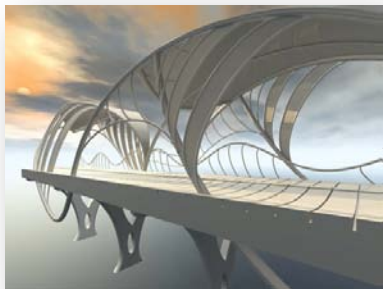


So Innovation?

It's not just the "new" idea...



...it's the **successful exploitation** of that idea



How does the **iNet** do this for the
Construction Sector?

By seeking innovation in...



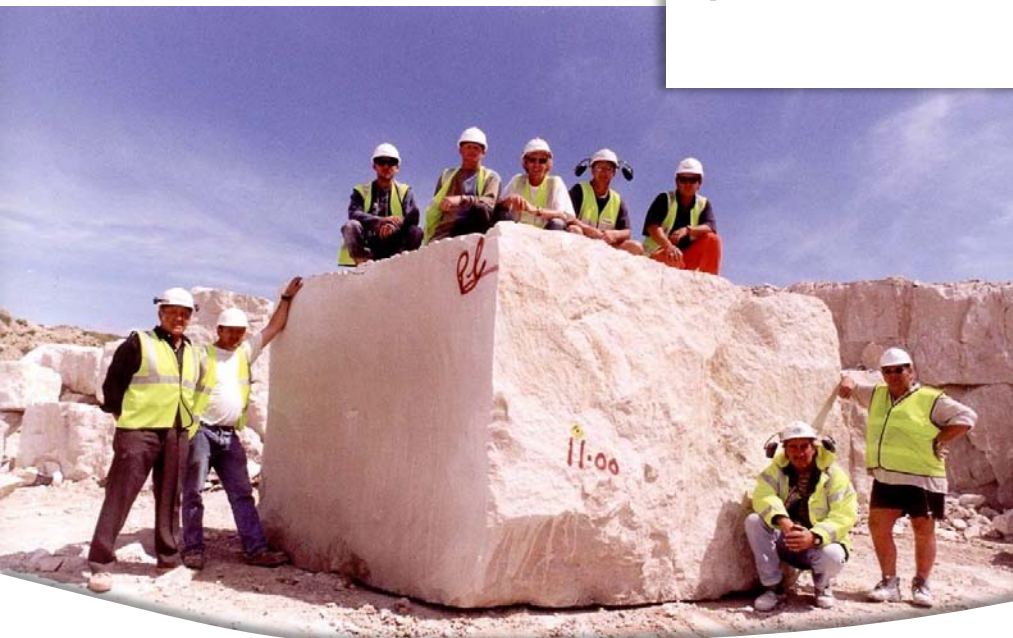
innovation

1. Innovative construction products & processes
2. Renewable energy products & strategies
3. The Code for Sustainable Homes
4. Sustainable refurbishment
5. Resource efficiency
6. Intelligent buildings

In these **sub sectors**



Sustainable **Construction**



plus associated areas

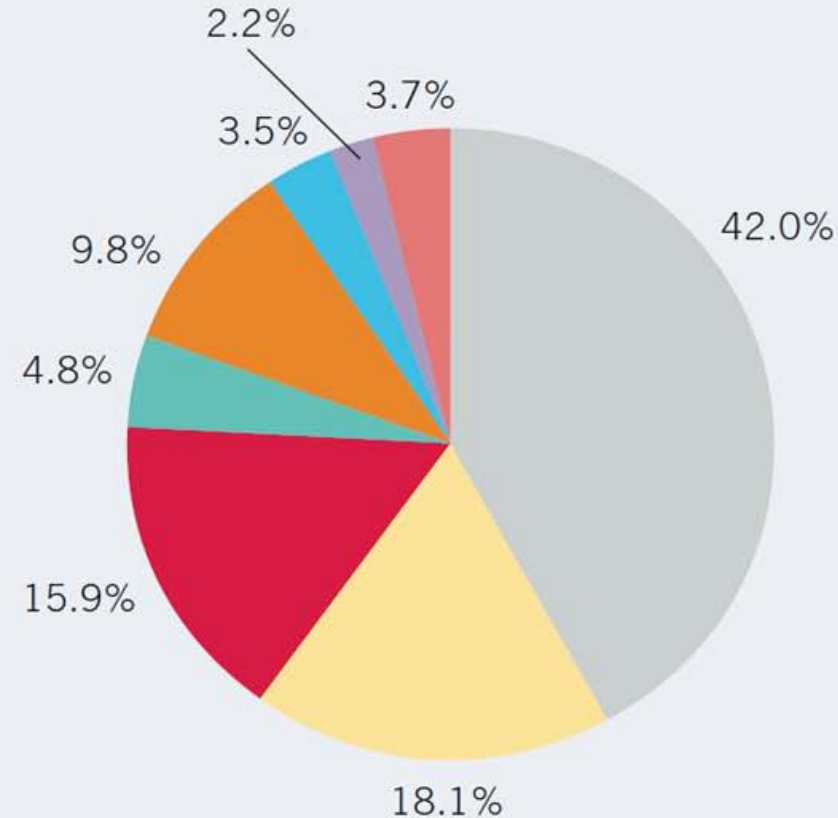


Sustainable Construction



Innovation Drivers

Cost efficiency	(193)
Sustainability	(83)
Client demands	(73)
Time constraints	(22)
Technology	(45)
Global competition	(16)
End user	(10)
Other, please specify	(17)

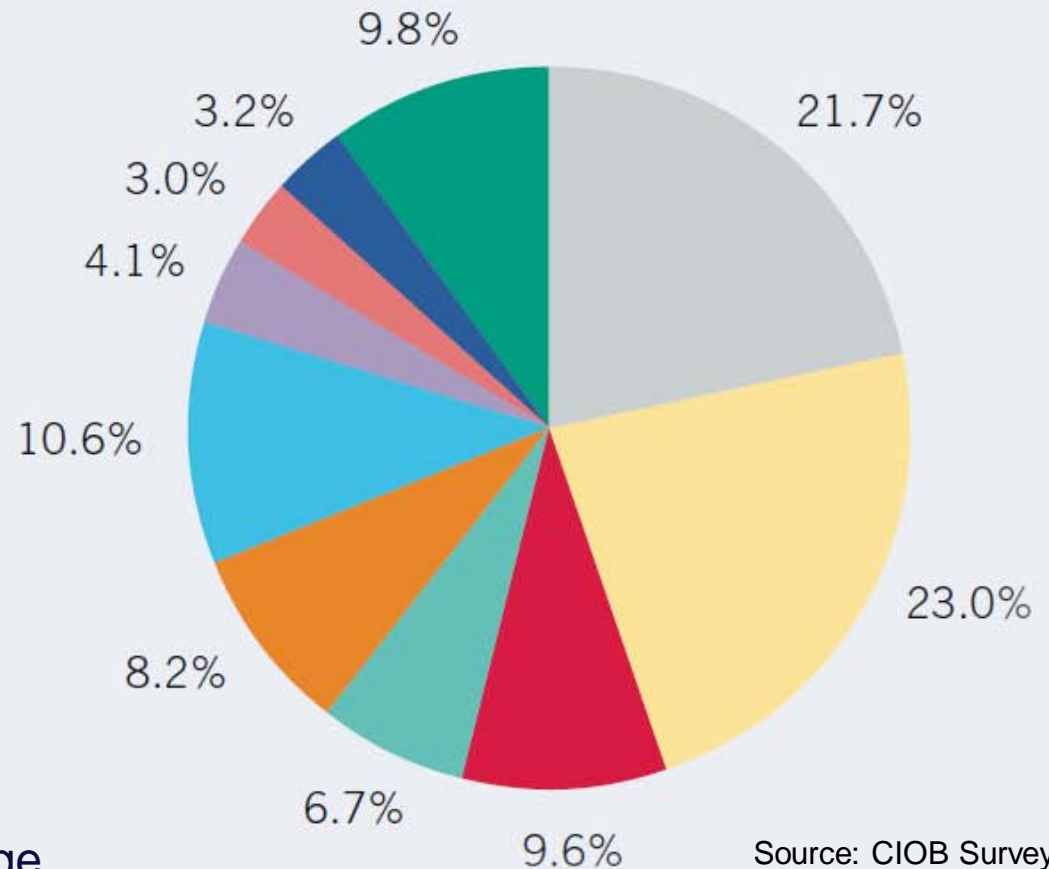


Source: CIOB Survey 2007

Others: “*Curiosity*”, “*making money*” and “*man’s inherent obsession with progress*”

Construction Sector R&D Spend

None	(100)
Less than £5,000	(106)
£5,001 to £10,000	(42)
£10,001 to £25,000	(31)
£25,001 to £50,000	(38)
£50,001 to £100,000	(49)
£100,001 to £250,000	(19)
£250,001 to £500,000	(14)
£500,001 to £1m	(15)
More than £1m	(45)



Source: CIOB Survey 2007

Throughout the industry there are a large number of companies spending either **nothing or very little** on R & D **compared** to their annual turnover.

We can help...



● Collaborative Research & Development (CRD)

Opportunities for SMEs to work with a University research department to develop a product or process.

● Innovation Support (IS)

Matched funding to offer SME companies:

- *Up to £7,000 per company / year*

- SME agrees to engage in innovation activity, approx. 3 months in duration, backed by a project plan which demonstrates that it will benefit from innovation specialist consultancy support;
- Can indicate the potential to grow and develop, commercialise the results of the innovative activity, and thus improve the business' future sustainability and regional economic contribution;
- Has sufficient financial, human and physical resources to meet the 'match funding' requirement.

- Must include 2 or more regional Higher Education Institutions (HEIs).
- Project must leverage additional (downstream) public sector funding of at least 3 times the value of the award.
- Some institutional contribution (cash or 'in kind') is required.
- Must have demonstrable economic benefit to the region.
- Preferably SME partner involvement, although not essential.
- Awards will be subject to ongoing monitoring and evaluation to inform the iNet team of effectiveness and impact.

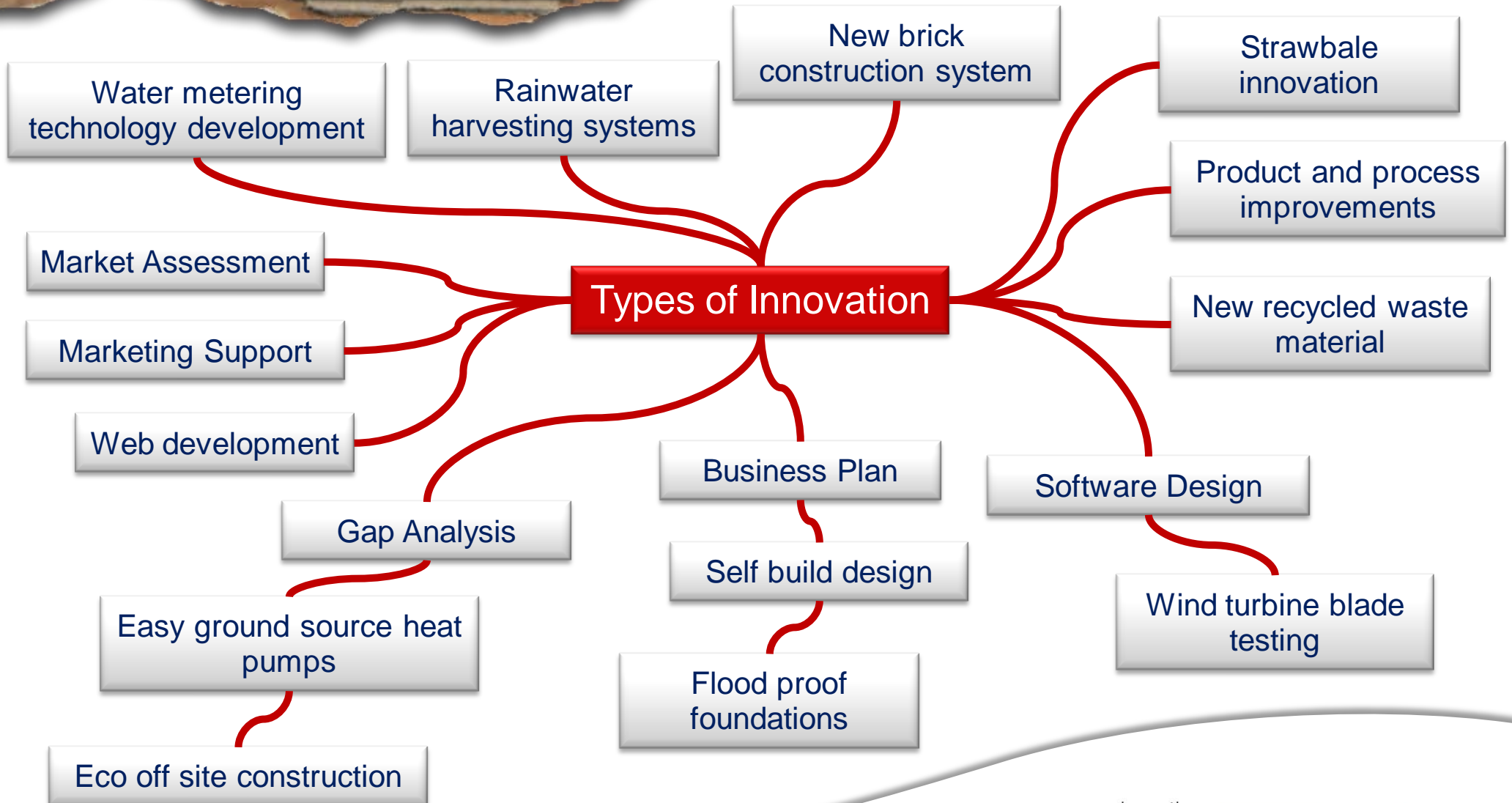


We've already helped many
companies...

IS recipient distribution 2009-10



Nature of Business	Innovation Support
Supply of product or service	17
Architect/Design	6
Building contractor/ house builder	3
TOTAL	26



Right As Rain

- Stormsaver Ltd is the UK market leader in commercial rainwater harvesting solutions
- The launch of its Monsoon[®] system – specifically for domestic properties – opened up new revenue streams
- iNet assistance and an ISG allowed Stormsaver to market the Monsoon[®] system effectively

Stormsaver Ltd

Location:
Winkburn, Nottinghamshire

Sector:
Rainwater harvesting

What the company does:
Supplies commercial and domestic rainwater harvesting solutions

Area of innovation:
Marketing support



A Blast Proof Innovation

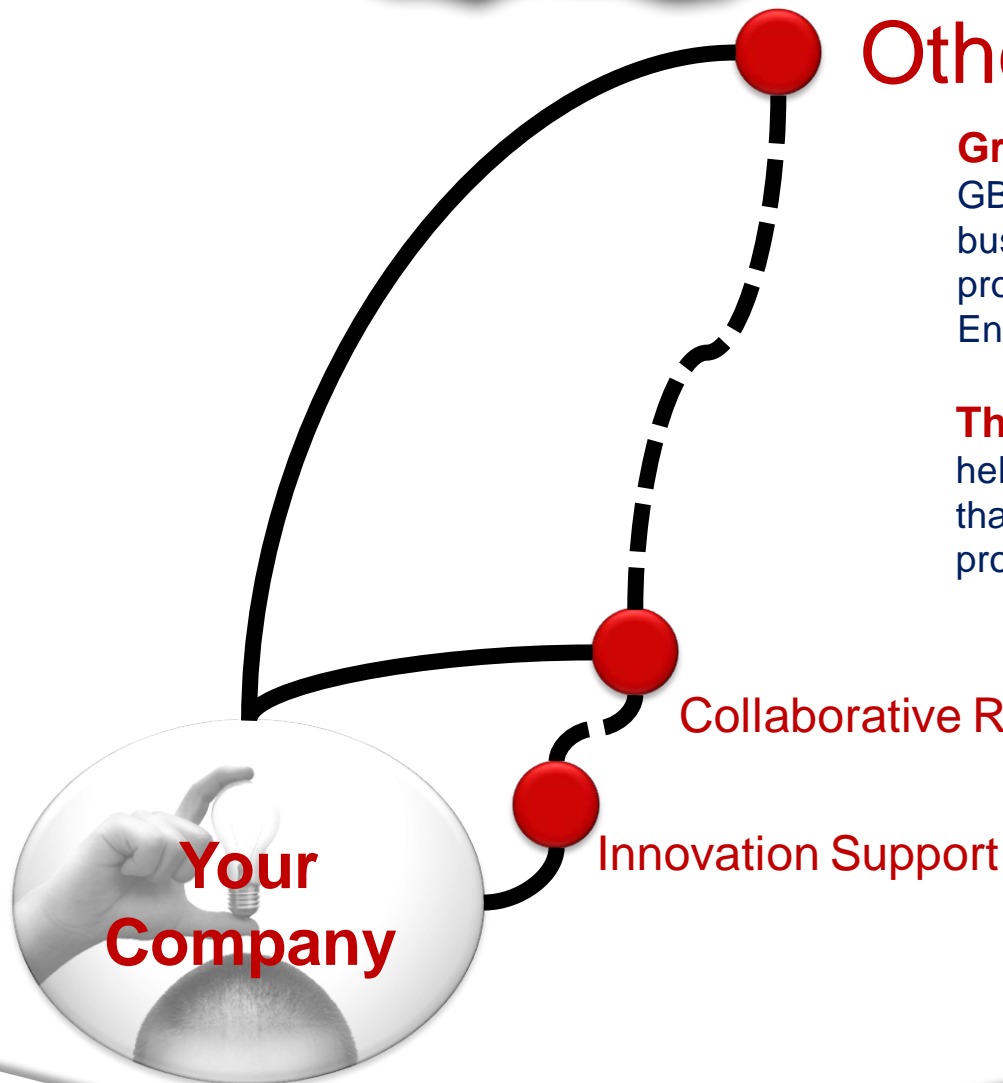
- **Midland Industrial Designers is a leading manufacturer of specialist powder handling valves**
- **The company approached the Sustainable Construction iNet for assistance in the development and certification of an innovative new rotary valve**
- **The innovation has secured jobs and the company is benefitting from a new revenue source.**

Sec
Construction

What the company does:
Manufactures valves

Area of innovation:
Product development





Grant for Business Investment (GBI)

GBI makes discretionary grants available to support businesses with investment projects which will increase productivity, skills and employment in deprived areas in England.

The Grant for Research and Development (GRD)

helps businesses carry out research and development work that will lead to technologically innovative products or processes.

In the East Midlands, this year, we intend to:

- Host networking / technology / skills events for **433+** individual SMEs
- Create **12** new jobs
- Assist over **70** SMEs in business performance
- Assist **285** people improve their skills development
- Grant **35** Innovation Support (grants) up to £7,000 of matched funding
- Support **5** CRD collaborations involving HEIs and SMEs

What about help for **your business?**

- For further information either contact me on 01604 89 2836
 - or visit www.eminnovation.org